



LIANDAKEJI

Dongguan LD Precision Technology Co., Ltd.



- CNC machining service
- 5-axis CNC precision machining
- Non-standard parts customization
- Prototype

According the drawing processing · MOQ 1 pc · Small batch production

专业五轴精密加工



LIANDA KEJI

东莞市联达精密科技有限公司

Dongguan Lianda Precision Technology Co., LTD

ABOUT US

The Group has two factories, Linda Precision focuses on 5-axis CNC, and Zhongda Model focuses on rapid prototype.

Dongguan LD Precision Technology Co., Ltd. was established in 2021, specializing in 5-axis CNC precision machining, suitable for impeller, blade, aviation military, electronics, medical, optical parts, micron electrodes, precision mold parts, etc., can stably achieve 2~5 μ m precision machining.

DongGuan ZhongDa Model Technology co.,ltd. , founded in 2013, has more than 40 employees, own processing equipment, professional to undertake all kinds of prototype and model production.



We always adhere to the "quality is life" business philosophy, for customers to effectively reduce the development cost, improve the development speed of the service purpose, won the support and trust from the United States, Japan, Canada, Britain, Germany, Singapore, Israel and other customers, the service industry covers: Household appliances, electronic products, medical equipment, sports equipment, auto parts, children's toys and other fields.

SERVICE CONTENT

CNC 5-axis machining



CNC prototype



Vaccum casting



Finished



Finished:
Polishing, sandblasting, anodized, painting,
screen printing.....

OFFICE ENVIRONMENT

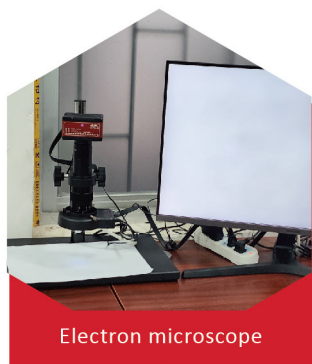
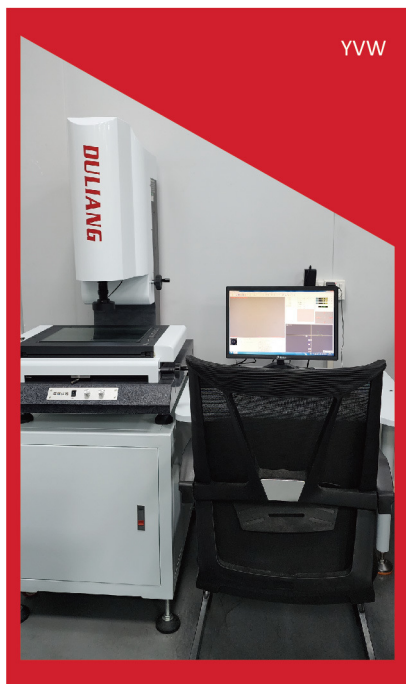


WORKSHOP SHOW



TESTING EQUIPMENT

Precision testing equipment: CMM, YVW, electron microscope, caliper, plug gauge.....



SAMPLE DISPLAY

5-axis CNC



01

Automobile engine blocks parts

Material: H13 (HRC52)

Dimensions: 183x184x191mm

Machine tools: JDGR400T

Highlights:

- + Use the DT programming technology of JINGDIAO CAM software to optimize the loading length and processing angle

- + Minimum use of R0.75 ball nose cutter for sidewall clearing



02

Fresnel lens mold test piece

Material: S136 (HRC50)

Size: $\Phi 30 \times 60$ mm

Machine tools: JDGR200T

Highlights:

- The PCD tool with +R0.1 is stable at 2 μ m for 99 hours, and the tool wear is less than 1 μ m

- + Surface roughness Ra<0.05 μ m

- + Dimensional accuracy $\pm 5 \mu$ m



03

Mirror headphone mold part

Material: STAVAX (HRC52)

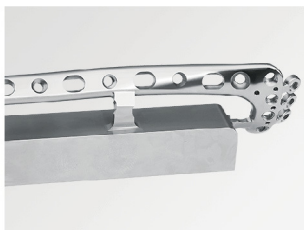
Machine tools: JDGR200T

Highlights:

- + R1mm PCD tool continuous and stable grinding and polishing for 19 hours, and the tool wear is less than 1 μ m

- + Single-station surface roughness Sa<20nm

- + The surface effect of the six stations is uniform and consistent, and the best tolerance is 0.01mm



04

Bone plates

Material: TC4

Size: 240x40x17mm

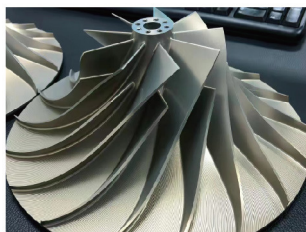
Machine tools: JDGR400T

Highlights:

- + Total processing time 2h45min

- + Material removal rate of more than 90%

- + Surface roughness Ra<0.8 μ m



05

Impeller

Material: SS316

Size: 238*238*161

Machine tool: JDGR400T

Highlights: runner, blade rough, finishing.

Surface roughness < 0.8um



06

Car model

Material: 6061-T6

Size: 31*16*10

Machine tool: JDGR200T



07

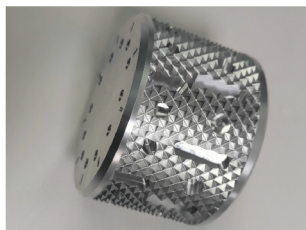
Aviation parts

Material: SS316

Size: 25*21*42

Machine tool: JDGR400T

Highlight: Surface roughness < 0.8um



08

Aviation parts

Material: SS316

Size: 30*30*20

Machine tool: JDGR400T

Highlight: Form and position tolerance 0.01MM

CNC prototype



Mobile robot hand board

01

Material: ABS

Process: CNC

Highlights: Painting, screen printing, assembly

Food processor prototype

02

Material: ABS/ Transparent PC

Process: CNC

Highlights: Smoke, spray painting, screen printing, assembly

Aluminum/stainless steel samples

03

Material: 6061-T6/SS

Process: CNC

Highlights: Lathe +CNC

Vaccum casting prototype



Silicone key

01

Material: Silicone

Process: compound mold

Highlights: multi-mode color separation

Children's toy prototype

02

Material: ABS/ silicone

Process CNC+ compound mold

Highlights: Multiple mode color separation, spray painting

EQUIPMENT LIST

No.	Type	Quantity	Equipment name	Operating range (mm)	Precision (mm)	Workshop
1	JDGR200T	2	5-axis CNC	500*280*300	±0.002	CNC workshop
2	JDGR400T	1	5-axis CNC	450*680*400	±0.002	
3	T-6	2	CNC	500x400	±0.01	
4	XQSK-655	6	CNC	650X550	±0.02	
5	XQSK-1813	1	CNC	950X750	±0.02	
6	/	1	Tapping machine	0~1mm	straightness accuracy 1/1000	
7	/	1	Drilling machine	0~50mm	straightness accuracy 1/1000	
8	/	1	Oil spray machine	/	/	
9	/	1	UV machine	/	/	
10	/	1	Sand-blasting machine	/	/	
11	/	1	Oven	L1500*W1450*H1700	/	Vaccum casting workshop
12	/	2	Vacuum defoaming machine	L1200*W1150*H1850	/	

LIST OF COMMON MATERIALS



Classify	Material	Color or type
CNC materials	Stainless steel	SS304,SS306,SS316,SS316L,SKD11...
	Aluminium alloy	6061-T651,5052-H112,5083-H112...
	Brass	/
	Copper	/
	Zinc alloy	/
	ABS	Beige,Black,White,Transparent
	Flame retardant ABS	Beige,Black,White,Transparent
	ABS+PC	Black
	PC	Transparent,Black,White
	PMMA	Transparent,Back,Black translucent,Milky translucent
	PA (Nylon)	Black,Beige,White
	PA+GF	Black,Beige,White
	POM	White,Black
	PP	White,Black
	PE	White,Black
	PEEK	Brown,Black
	Bakelite	Brown,Black
	PBT	White,Black
	PVC	Grey,Transparent
	PPS	Dark blue,Natural color
Vaccum casting materials	Same like ABS	8150,PX100 PX-215,PX118/F PX118/L
	Rubber	8400,387
	Transparent PC	PX527
	Flame retardant nylon	8263



COOPERATIVE CLIENT



Dongguan LD Precision Technology Co., Ltd.

Address: 27 Huanglang Road, Chang 'an Town, Dongguan 523850, China

Tel: +86-0769-85390849/13242013602

Email: info@cnc-ld.com



DongGuan ZhongDa Model Technology co.,ltd.

Add: 701,7th floor,No.1 yongsheng road,yongtou village, changan town,dongguan 523850,China

Tel: +86-0769-85390849/15338009706

Email: info@hd-model.com